

The Community Fund

Bronxville • Eastchester • Tuckahoe



Annual Report 2015

The Community Fund has been serving the needs of our residents since 1919

Nurturing local non-profit organizations, connecting agencies, and working with local government and community programs; our goal is to continue to improve on this wonderful place we call home.

Fall 2015

It is with great pride that we present to you The Community Fund's 2015 Annual Report, detailing the impact your contributions have made on our community for the period July 1, 2014 – June 30, 2015. Thanks to contributions from families, individuals and businesses, we were able to allocate **\$563,700** in total grants, supporting 26 social service agencies and community programs that provide services to local residents of Bronxville, Bronxville P.O., Eastchester and Tuckahoe.

Other highlights of the year include:

- Successfully completed our annual review of member and new applicant agencies and approved new grant to Wartburg in support of senior services
- Awarded **\$20,153** in Discretionary Grants to support one-time initiatives and special programs to the following non-profit organizations: *Eastchester Traffic Expo - Kids Safety Day, Westchester End of Life Coalition, Cancer Support Team Inc., One Love Foundation, South East Consortium for Special Services and the Tuckahoe Library Summer Reading Program*
- Presented Patty Donovan-Duff, Director of the Bereavement Center of Westchester, our inaugural Community Fund Award in recognition of her 20 years of service to BET residents leading the Bereavement Center and its Tree House Program
- Funded over 750 flu shots for BET residents through our partnership with NY Presbyterian/Lawrence Hospital

Our ability to support the community is made possible by our donors. We distribute **100%** of donations made to our Annual Campaign via grants that have a direct impact on all residents in Bronxville, Bronxville P.O., Eastchester and Tuckahoe.

Thank you. You have given generously, volunteered your time and most importantly been steadfast in your support. The Community Fund could not do what we do without you.



Doug Meyer
2015-2016 President



Melinda Burge
Executive Director



96

YEARS OF MEETING THE
NEEDS OF OUR COMMUNITY



Mission

Founded in 1919, The Community Fund is a 501 (c) (3) non-profit corporation comprised of local volunteers who are dedicated to providing funding and administrative support to non-profit social service agencies and community programs that serve residents throughout the Bronxville, Bronxville P.O., Eastchester and Tuckahoe (BET) community.

Action

Each year, The Community Fund conducts an extensive evaluation process to review the performance of its member agencies and community programs, and consider applications of new organizations that may be providing needed service to our residents. With the help of our board of directors and local volunteers, The Community Fund then meets with each agency to determine the appropriate level of financial support and guidance required to help these groups better serve our BET community.



Bronxville Eastchester Tuckahoe



\$5,500,000

IN GRANTS AWARDED TO BENEFIT THE RESIDENTS
OF OUR COMMUNITY OVER THE LAST 10 YEARS!

The majority of funding goes to programs and services shared by all of Bronxville, Bronxville P.O., Eastchester and Tuckahoe, including:

- State of the art ambulances
- NY Presbyterian/Lawrence Hospital programs
- Substance abuse education and prevention programs
- Programs and services for seniors
- Therapeutic recreational programs for children and adults with disabilities and special needs

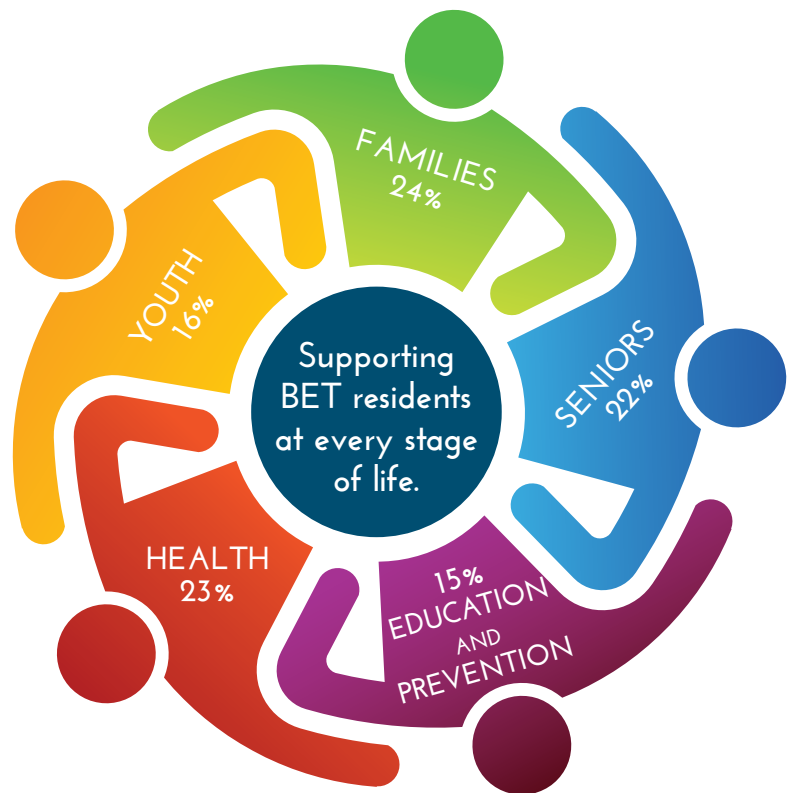


Impact

When you donate to The Community Fund (CF) you make a direct impact in the lives of people around you. Last year the CF approved \$538,700 in grants to our member agencies and community programs, serving a diverse population across the BET community.

We also set aside \$25,000 for special one time Discretionary Grants which are distributed throughout the year to help with a specific need or to foster a new initiative.

OUR GOAL IS TO SUPPORT AGENCIES THAT BEST SERVE THE NEEDS OF OUR RESIDENTS THROUGHOUT EVERY STAGE OF LIFE.



100%

OF EVERY GIFT GOES TO GRANTS

How We Make

THE COMMUNITY FUND AWARDS OVER \$500,000 EACH YEAR TO NON-PROFIT ORGANIZATIONS AND PROGRAMS, INCLUDING:



Youth

- Affordable after-school enrichment programs and summer camp for children
- Local youth programs that promote confidence, self-esteem, leadership and decision making skills
- Community police programs that focus on safety, positive behavior and character building

Families

- Bereavement services for children and their surviving parent(s) who have experienced the death of a parent or sibling
- Therapeutic/recreational programs that support our children and adults with disabilities and special needs
- Low cost counseling for qualifying individuals and their families
- Confidential hotline and counseling for victims of rape, violence or other serious crimes



Seniors

- Transportation, home help and referral services for local seniors to help them stay active and able to remain in their homes
- Weekly activities that promote social interaction, mental acuity and physical fitness
- Music, dance and movement therapy programs to enhance cognitive functioning

A Difference

Health

- A new state-of-the-art ambulance every three years for Eastchester Volunteer Ambulance Corps (EVAC), the primary ambulance provider for our community
- Support services for cancer patients including nursing, social work, psychological support, advocacy, nutritional counseling, case management and financial assistance
- Education and support for those with life limiting and terminal illnesses



Education and Prevention

- Substance Abuse education programs in all three BET school districts
- Extra child day care hours for qualifying families so that parents can work while the developmental needs of their children are being met
- Scholarships to further higher education for graduating seniors from all three BET High Schools



Discretionary Grants

- One time grants, distributed throughout the year, to help with a specific need or to foster a new initiative

\$563,700

IN TOTAL GRANTS ALLOCATED FOR FY 2016

Where Your Donations Go

TO 26 NON-PROFIT ORGANIZATIONS AND PROGRAMS THAT BEST SERVE OUR RESIDENTS



Youth

WESTCOP/Eastchester Community Action Partnership (ECAP) – provides needed community services, including a food pantry, after-school programs, summer activities for children, and emergency support. *CF dollars fund the Books & Beyond After-School Program and the Summer Enrichment Program.* <http://www.westcop.org/eastchester-c-a-p/>

The Eastchester Teen Scene – offers a series of organized programs throughout the year, including school breaks and summer months, to Bronxville, Eastchester and Tuckahoe youth in grades 7-9. Offered through the Eastchester Department of Parks and Recreation, the programs are geared to provide fun, safe, age-appropriate activities for teens. *CF dollars provide general program support.* www.eastchester.org/departments/recreation

The Eastchester Youth Council, Inc. – offering tuition-free instruction in drama, voice, dance, instrumental music and theater crafts, culminating with a musical presentation in August. *CF dollars provide support for this summer theater enrichment program for Bronxville, Eastchester and Tuckahoe youth.*

Bunny Rappaport, Executive Director – rappmom22@aol.com

Tuckahoe Police Youth Initiatives – innovative programs for young people designed to foster positive police officer - youth relationships, including: COPS For Kids Softball Game, Run For Your Life Road Race, Safe Riders Day, Tuckahoe Police Department Open House and the Law Enforcement Explorers Program. *CF dollars fund these dynamic programs that positively impact the lives of our young people.* Tuckahoe Police Department – 961-4800

Families

The Bereavement Center of Westchester – provides support for children and adults in the community who have had a death in their lives through individual counseling and peer support groups. *CF dollars help sponsor the Bronxville Tree House Program – a program for children between the ages of four and eighteen whose parent or sibling has died, and their surviving parent(s) or guardian(s).*
www.thebereavementcenter.org

The Counseling Center, Inc. – offers counseling and psychotherapy to families seeking help for a variety of emotional conflicts and family problems. *CF dollars provide fee subsidy support for BET residents in need.*
www.counselingcenter.org

The Maxwell Institute – provides assessment, intervention, treatment and recovery support for those fighting substance abuse. *CF dollars provide fee subsidies for treatment services to BET residents in need.*
www.stvincentswestchester.org/themaxwellinstitute.html

South East Consortium for Special Services – offers therapeutic recreational programs, leisure experiences, and respite opportunities for youth, teens and adults with disabilities and special needs. The programs are geared to enhance the individual physically, emotionally, culturally and socially, by offering opportunities to interact with others while engaging in community based activities. *CF dollars support BET residents participating in programs, including those at the Bronxville High School, the Cottle School, the Eastchester Middle/High School and the Tuckahoe Community Center.* www.secrec.org

Westchester Community Opportunity Program Inc. (WESTCOP) / Victims Assistance Services – provides free and confidential services for BET residents who are at risk or are victims of violence and serious crime such as robbery, burglary, identity theft, stalking, domestic violence, dating violence, sexual assault, child or elder abuse, child abduction, kidnapping, terrorism and services to the loved ones of homicide victims. VAS offers 24/7 Rape Crisis Hotline and SAFE (Sexual Assault Forensic Examiner) Program at local hospitals. *CF dollars support services provided to victims residing within the BET community.* www.westcop.org/WP/victims-assistance



50 EVALUATORS

CONDUCT THOROUGH REVIEWS
OF ALL APPLICANT AGENCIES
TO ENSURE OUR FUNDING
HAS MAXIMUM IMPACT





Seniors

Cabrini of Westchester – provides high-quality, compassionate skilled nursing and short-term rehabilitation care as well as home care and adult day care services for seniors. *CF dollars support the music therapy program for residents from the BET community.*

www.cabrini-eldercare.org

Eastchester Senior Programs & Services – provides a broad range of community-based support services designed to enable Bronxville, Eastchester and Tuckahoe seniors to remain in the community, living independently for as long as possible. *CF dollars support the weekly activity programs at the Lake Isle, Garth Road and Jackson Avenue senior centers. CF also funds medical and bus escorts, housecleaning services, the Shopping Chores & More Transportation Program and Sundays at Concordia.*

www.eastchester.org/departments/senior_programs_and_services

Gramatan Village – offers seniors access to a network of affordable services, transportation and home help, with the goal of helping them remain in their homes safely and confidently as they age. *CF dollars provide membership fee subsidies to BET residents who qualify.* www.gramatanvillage.org

The Senior Citizens Council – offers programs to prevent isolation in seniors residing in Bronxville, Bronxville 10708, and Tuckahoe. *CF dollars help pay for exercise, cultural and educational programs at its Bronxville and Tuckahoe centers.* <http://bronxvilleseniors.org/>; <http://www.tuckahoeseniors.org/>

Tuckahoe Trolley – provides free transportation for residents in need every Friday and Saturday, weather permitting, with 14 stops in Tuckahoe and Eastchester. *CF dollars help support the cost of running the Trolley.*

Wartburg – provides premier residential and healthcare services including a skilled nursing facility, short-term inpatient/outpatient rehabilitation, independent/assisted living, specialized Alzheimer's/dementia care as well as home care and adult day care services for seniors. *CF dollars support the dance and movement therapy program for residents from the BET community.* <http://www.wartburg.org>

Health

Cancer Support Team, Inc. – offers a comprehensive program of free services at any stage of the disease for cancer patients and their families living in lower Westchester including nursing, counseling, education, case management and other supportive services. *CF dollars provide financial support for their work in the BET community.* www.cancersupportteam.org

The Cancer Survivorship Program at NYP/Lawrence Hospital – offers psychological support, advocacy, needed medical or other referrals and survivorship plans of care for the overall health and well-being of post-cancer patients. *CF dollars help support this innovative program for post-treatment cancer survivors.*

<http://www.nyplawrence.org/Programs-Services/Cancer-Care/Cancer-Survivorship-Program.aspx>



The Community Flu Shot Program at NYP/Lawrence Hospital Center – *CF dollars fund this program which administered 750 vaccines in 2015 to residents of BET.*

Eastchester Volunteer Ambulance Corps (EVAC) – EVAC is the primary ambulance provider to residents of Bronxville, Eastchester and Tuckahoe. *CF dollars are accrued each year to be used toward the purchase of a new ambulance every three years to maintain its fleet of three.* www.eastchesterems.com

Westchester End-of-Life Coalition (WELC) – works to improve the end-of-life experience by informing the public about available services and acting as a conduit for networking among lay people and professionals in the field. *CF dollars provide ongoing support in the BET community for their general work on maintaining and enhancing resources, and the distribution of information, including the “Everybody Needs a Proxy” campaign and “Live With Care” website.*

www.westchesterendoflife.org



Providing funding for EVAC’s Ambulance fleet since 1999!

Education and Prevention Programs

Andrus Early Learning Center (AELC) – offers quality day care and early childhood education for children ages six weeks to five years. *CF dollars support 17 preschool children in AELC’s Head Start Program, from qualifying families residing in the BET community, allowing them extended hours to meet the educational and developmental needs of the children.* <http://andruscc.org/?s=early+learning+center>

D.A.R.E. (Drug Abuse Resistance Education Program) – focused on the prevention of drug, alcohol and substance abuse, the D.A.R.E. program also addresses handling peer pressure, bullying and making overall good decisions. The educators are specially trained police officers, fostering the police officer - youth relationship. *CF dollars fund the programs in the Eastchester and Tuckahoe schools.*

The Maxwell Institute – offers alcohol and substance abuse education and prevention programs to families, schools, community groups and professionals. *CF dollars fund the drug and substance abuse programs presented to BET schools, colleges, parents and local community groups.* www.stvincentswestchester.org/themaxwellinstitute.html



Michael Frey Scholarships – given in memory of Michael Frey, and in appreciation for all the support the community receives from its dedicated police, fire and other emergency workers. *CF dollars fund these scholarships given to students graduating from each of the three BET high schools.*

Eastchester Traffic Expo – annual Kids Safety Day providing demonstrations on proper car seat installation, free bike helmets, photo ID, fingerprinting, and free vision and blood pressure screening. *CF dollars help offset the cost of the event.*

FY 2016 Community Fund Grants

YOUTH PROGRAMS

Eastchester Community Action Partnership – <i>After School & Summer Youth Program Support</i>	\$52,000
Eastchester Teen Scene – <i>Organized programs for Teens in BET area</i>	\$10,000
Eastchester Youth Council – <i>Youth Summer Theater - Program Support</i>	\$15,000
Tuckahoe Police Youth Programs – <i>Community Youth Program Support</i>	\$8,300
Youth Programs Subtotal	\$85,300

FAMILY SERVICES

The Bereavement Center – <i>Support of the Bronxville Tree House</i>	\$35,000
Counseling Center – <i>Fee Subsidy Program</i>	\$37,000
The Maxwell Institute – <i>Fee Subsidy Program</i>	\$15,000
S.E. Consortium for Special Services – <i>Recreation Programs for Children Teens & Adults with Disabilities</i>	\$18,000
Victims Assistance Services – <i>Crisis Intervention, & Prevention Programs</i>	\$23,000
Family Services Subtotal	\$128,000

SENIOR SERVICES

Cabrini of Westchester – <i>Music Therapy Program</i>	\$3,700
Eastchester Senior Program & Services – <i>Support for Eastchester Centers & Services</i> ..	\$44,500
Gramatan Village – <i>Fee Subsidy Program</i>	\$15,000
Senior Citizens Council – <i>Support for Bronxville & Tuckahoe Centers</i>	\$35,000
Tuckahoe Trolley – <i>Transportation for Seniors & Families</i>	\$8,000
Wartburg – <i>Dance and Movement Therapy Program</i>	\$13,500
Senior Services Subtotal	\$119,700

HEALTH SERVICES

Cancer Support Team – <i>Cancer Counseling & Support</i>	\$30,000
EVAC – <i>Ambulance Purchase Program</i>	\$50,000
The Cancer Survivorship Program at NYP/Lawrence Hospital – <i>Program Support</i> ..	\$20,000
The Community Flu Shot Programs at NYP/Lawrence Hospital – <i>Vaccine Funding</i> ..	\$13,000
Westchester End of Life Coalition – <i>Program Support</i>	\$13,000
Health Services Subtotal	\$126,000

EDUCATION & PREVENTION SERVICES

Andrus Children’s Center – <i>Early Learning Center-Tuition Assistance</i>	\$30,000
D.A.R.E. Eastchester – <i>Substance Abuse Education</i>	\$7,000
D.A.R.E. Tuckahoe – <i>Substance Abuse Education</i>	\$2,200
Eastchester Traffic Expo – <i>Kids Safety Day</i>	\$1,500
The Maxwell Institute – <i>Substance Abuse Education & Prevention Programs</i>	\$30,000
Michael Frey Scholarships – <i>Scholarships to Graduating Seniors</i>	\$9,000
Services Subtotal	\$79,700

Total Member Agency and Community Program Grants	\$538,700
Special Projects Discretionary Fund	\$25,000
TOTAL GRANTS	\$563,700

*Audited Financial Statements are available upon request.

How You Can Help

Make a Tax-deductible Contribution

A contribution to The Community Fund makes a positive impact on the lives of people living here in our BET community.

- **Contribute Directly or Online** – We accept cash, personal checks, American Express, Visa and Master Card. You can also call us at (914) 337-8808 with your credit card information or donate through our website www.thecommunityfund.org.
- **Contribute Through Your Workplace** – Many companies have Matching Gift, United Way or Corporate Giving campaigns. Please check with your employer on how you can maximize the strength of your gift and reference our *501 (c) (3) Tax ID# 13-1852829; address, 17 Sagamore Road, Bronxville, NY 10708* and be sure to notify us so that we are aware of your gift.
- **Contribute Stock** – Donations of stock allow you to avoid capital gains tax on appreciated securities. Please transfer to: *Dreyfus DTC 0443 The Community Fund of Bronxville-Eastchester-Tuckahoe Account # 74B176100.*

Be an Evaluator

Evaluators are the heart and soul of The Community Fund. Each year we work with volunteers who have been chosen based on their local knowledge, expertise and talents. Our volunteers then meet on-site with each applicant agency to review the need for and impact of the services provided, how well the services are provided, and the financial position of the agency. Based on their comprehensive review, the evaluators make a funding recommendation as to how The Community Fund can best support the agency and our residents.

Support our Golf Outing

Proceeds from our annual golf outing provide approximately 20% of our total revenue each year, directly impacting the amount of grant allocations we are able to make.

- **Be a Sponsor** – Sponsorships are tax deductible and provide a great way to support the BET community.
- **Donate to the Event's Auction or Raffle through Gifts in Kind** – Revenue from these events is imperative to the success of our outing.
- **Join our Golf Committee** – Help plan the day, find sponsors, or organize the auction while getting to know people from all three BET communities.
- **Join us that day** – Play golf or attend the awards dinner and auction that evening. Either way, your support will help!



THANK YOU TO OUR

SILVER PATRON (\$10,000+)

Mary & Joe Landy **
Mr. & Mrs. John Lykourazos *
Mr. & Mrs. P. Douglas Meyer **
Mr. & Mrs. David Outcalt *
Margaret & Andrew Paul **

PRESIDENT'S COUNCIL (\$7,500 – \$9,999)

Emily & John Corry **
Rose & Steve Crawford **
Mr. & Mrs. Donald M. Gray, Jr. **
Pepe Auto Group **
Mr. & Mrs. John Reynolds *

BENEFACTOR (\$5,000 – \$7,499)

Mr. & Mrs. Anthony Anagnostakis **
Susan & Larry Bettino **
Mr. & Mrs. David Coquillet **
Jennifer & Richard DeMartini **
Kristen & Tom Evans **
Mr. & Mrs. John J. Kenney **
Karin & David Kuhns **
Mr. & Mrs. Marc Kutzin **
Kristin & Doug Londal **
Mr. & Mrs. Scott Miller *
Mr. & Mrs. W. Carter Neild **
Mr. & Mrs. James Rotenberg *
Laurie & Hoke Slaughter **
Mrs. Lisa Kunstadter & Mr. Nick Stephens **
Mrs. Thomas P. Tredway, Jr. **
Mr. & Mrs. Charles J. Urstadt **
Rosanne & Mark Welshimer **

LEADER (\$2,500 – \$4,999)

Lisa Smith & David Barr **
Bronxville Derby Association **
Mr. & Mrs. Patrick Burns **
The Coffey's **
Jennifer & Andrew Colao **
Mr. & Mrs. E. Virgil Conway **
Mr. & Mrs. Robert Crystal *
Mrs. Monique Cusson &
Mr. Constantine Dakolias **
Gayle Haller & Richard Davies **
Anonymous
Mr. & Mrs. William Dougherty **

Annette & Bill Dowling **
Mrs. Chris Eldridge **
Ms. Chris Zufelt &
Mr. Brian Fetherstonhaugh **
Ms. Judy M. Foley *
Mr. & Mrs. Chun Fong
Mr. & Mrs. James Hoch **
Jennifer & Scott Mackesy **
Mr. & Mrs. Ronald A. Mager *
Candy & Mike Monaco **
The O'Connor Family Foundation **
Mr. & Mrs. William Rizzo *
Michele & Jeffrey Rohr **
Mr. & Mrs. Philip D. Sherman **
Mr. & Mrs. Frederick H. Taylor, Jr. **
Mr. & Mrs. Daniel Toal **
Valerie Ann Wilson **
Juliet & John Zygmunt **

MEMBER (\$1,000 – \$2,499)

Mr. & Mrs. Omar K. Abboud **
Elizabeth & Peter Aherne **
Mr. & Mrs. Stephen F. Arcano **
Mr. Dana Arrighi *
Mr. & Mrs. Jonathan Atkeson *
Ms. Lindsay Baker &
Mr. Christopher Diangelo**
Mr. & Mrs. William H. Barton **
Mary & Chris Behrens **
Mr. & Mrs. Brian Belke
Mrs. Barbara Brackenridge **
Mr. & Mrs. Thomas C. Brasco **



Michelle & Paul Brusco **
Mr. Michael Calano **
Carol Conway & Robert Castano **
Margaret & Anthony Colavita **
Mr. Michael V. Connolly **
Dr. Patricia Cook **

Mr. & Mrs. Giovanni Cutaia *
Susan & Michael Delaney **
Mr. & Mrs. Neal Denning *
Ellen & Pierre deSaint Phalle **
Ms. Danielle Zimbaro &
Mr. Dwayne Doherty *
Mr. & Mrs. Robert P. Dohn **
Dr. Helene Murtha Dooley &
Mr. Joseph Dooley **
Mr. & Mrs. John Duffy *
Mr. William Ellinghaus **
Mr. & Mrs. Travis F. Epes **
Mr. & Mrs. Michael Finley **
Mr. & Mrs. John B. Fitzgibbons **
Vicki & Si Ford **
Susan & Leonard Formato **
Susan & Ed Forst **
Mr. & Mrs. Robert Freeman *
Frehse Family Fund **
Mr. & Mrs. A. Corwin Frost **
Mr. & Mrs. Joseph Gherardi **
Anonymous **
Mrs. Betsy Goodell **
Mrs. Jane Skinner & Mr. Roger Goodell *
Mrs. Constance Grassi **
Mr. & Mrs. David S. Harris **
Molly & Tom Hendrick **
Mr. & Mrs. Peter J. Hicks **
Marilynn & John Hill **
Mr. & Mrs. Kenneth Holden **
Linda & John Howitt **
Ms. Cinda Hughes & Mr. David Mintzer
Mr. & Mrs. Eric Jensen **
Ms. Linda Graef Jones
Mr. & Mrs. Ryan Kenny *
Mr. & Mrs. Michael Koester **
Anonymous *
Mr. & Mrs. Kurt Krestinski *
Mrs. Ruddick C. Lawrence **
Mr. & Mrs. Thomas Lee **
Mr. & Mrs. Beau Lescott *
Mr. & Mrs. Michael Lynch **
Mr. & Mrs. Daniel S. MacDonald, Jr. **
Mr. Kevin M. McGahren **
Mr. & Mrs. Robert McGrath **
Sandy & Mike McManus **
Ms. Tracy McVey **
Mr. & Mrs. Thomas K. Moore **
Terry & Nicola Mullen **

DONORS

Betsy & Bill Murphy **
The Nagle Family **
Mr. & Mrs. Richard Nicklas **
Mr. & Mrs. Chadwick Parson **
Anonymous **
Ms. Dawn A. Patterson **
Mr. & Mrs. Brent Pendleton **
Katie & Peter Pennoyer **
Mr. & Mrs. James Powell *
Mr. & Mrs. Andrew C. Quale **



Raffiani Family Foundation **
Mr. & Mrs. Sheldon Reynolds **
Ms. Nina Richter **
Wendy & Bob Riggs **
Mr. & Mrs. Richard K. Rogers **
Mr. & Mrs. Charles J. Rollins **
Mr. & Mrs. Troy Ruhanen *
Mr. & Mrs. Joseph Saluti **
Mr. & Mrs. Michael Sands **
Emely & Dennis Scioli **
Jane & Luke Sears **
Mr. & Mrs. Tushar Shah
Tina & Bill Staudt **
Mr. & Mrs. Ronald Stechler **
Rita & Alan Steinkamp **
Ms. Patricia M. Perez-Garcia &
Mr. Neil Stronski *
Ms. Berit Block & Mr. Phillip Tamussino
Mr. & Mrs. Volney Taylor **
Jennifer & Owen Thomas **
Mr. & Mrs. John E. Toffolon, Jr. **
Anne & John Torell **
Dr. Stavra N. Romas &
Mr. Denisson T. Veru *
Mr. & Mrs. Brennan J. Warble **
Mary & Gordon Watson **
Mr. & Mrs. Leighton B. Welch **
Mr. & Mrs. John Westerfield **

Mr. & Mrs. Richard M. Whitney **
Linda & Bill Zambelli **

FRIEND (\$500 – \$999)

Mr. & Mrs. Brenden Ahern *
Mr. & Mrs. Ryan Anderson
Anonymous
Mr. & Mrs. E. William Bates II **
Mr. & Mrs. James Benjamin **
Mr. & Mrs. Alex Bici
Jane & Jack Bierwirth **
Emily & Harold Bogle **
Mr. & Mrs. Scott Burge **
Jennifer & Brian Buttigieg **
Robert & Elizabeth Cangro **
Mr. & Mrs. James Carroll **
Mr. & Mrs. Thomas Cascione **
Cynthia & George Cooney **
Katie & David Cyganowski **
Mr. & Mrs. Keith Dawson **
Kristi & Jim Deasy **
Mrs. Mallory Andrews &
Mr. Jesse delaRama III **
Mr. & Mrs. Thomas Dempsey **
Mr. & Mrs. Jon Denfeld
Mr. & Mrs. Michael Doheny
Mr. & Mrs. Tim Donahue *
Mr. & Mrs. Michael D'Onofrio
Eastchester Volunteer Ambulance Corps **
Dr. & Mrs. Chester M. Edelmann Jr. **
Patsy & Wright Elliott **
Elizabeth & Charles Engros **
Mr. & Mrs. Frederic A Escherich **
Mr. & Mrs. Devin M. Fitzgerald *
Mrs. Wayne Fredericks **
Mr. & Mrs. William C. Fredericks **
Elsa & Donald Gammon **
Mrs. Ingrid M. Mesa-Gibbons &
Mr. Adam C. Gibbons **
Mr. & Mrs. David H. Griffin **
Mr. & Mrs. Brian Hail *
Mr. & Mrs. Marc P. Hanrahan **
Ms. Jean E. Hanson **
Gordon & Elizabeth Harriss **
Mr. & Mrs. Andrew Harwood **
Mr. & Mrs. Steven Hawkey
Mr. & Mrs. Paul Heathwood
Joan & David Henle **
Maureen & Jim Hennessy **

Mr. & Mrs. Michael Heraty
Mr. & Mrs. Michael Higgins *
Elisabeth & Peter Holland **
Kathy & Patrick Hughes **
Susan Meaney & Peter Incledon **
Mr. & Mrs. Walker Jacobs
Mrs. Janet Johnson **
Mr. & Mrs. Christopher Johnson *
Mr. & Mrs. Thomas M. Kenney **
Mr. David Kiefer *
Mr. & Mrs. James T. Knight **
Mr. & Mrs. William Knox *
Mr. & Mrs. Andrew Korb *
Anonymous **
Mr. & Mrs. Lyle LaMothe
Mr. & Mrs. Charles Law *
Mr. & Mrs. Robert MacNaughton III *
Eileen & Jeff Marshall **
Maureen & Donald McAllister **
Cheryne & David McBride **
Mr. & Mrs. Vincent J. McBride *
Mr. & Mrs. Thomas D. McCandless **
Mr. & Mrs. Ashton McFadden
Lianne & Guy McKhann **
Mr. & Mrs. Christopher J. McMahan **
Mr. & Mrs. Robert K. McNamara **
Mr. & Mrs. Christopher Mestl



Mr. Rory O. Millson **
Mr. & Mrs. James S. Mitchell **
Mr. & Mrs. James Molloy
Ms. Susan Finch Moore & Mr. Charles Moore *
Mr. & Mrs. Donald P. Moriarty, Jr. *
Mr. & Mrs. Michael Moschetta **
Mrs. Susan Murphy &
Dr. Quentin M. Murphy**
Laura & Brian Murphy **
Mr. & Mrs. William P. Newhall **
Mrs. Sarah J. Peters **

* Supporter for 3 or more years
** Supporter for 10 or more years

OUR DONORS (Continued)

Nancy and Bill Petty **
 Mr. & Mrs. Edward Poletti *
 Mr. & Mrs. Michael Pytosh *
 Mr. & Mrs. L. Matthew Quigley **
 Mr. Clyde E. Reetz **
 Mr. & Mrs. James L. Richy *
 Mr. & Mrs. Scott Robinson *
 Christine & David Rogers **
 Mr. & Mrs. Tomas Ruiz
 Mr. & Mrs. Bradley Sabel **
 Mr. & Mrs. Alvaro J. Saralegui *
 Gloria & John Schroeder **
 Vivian & Robert Seman **
 Mr. & Mrs. Vivek Shah
 Linda & Bob Shearer **
 Cristina and Kirk Sperber **
 Mr. & Mrs. Joseph M. Spillane **
 Sterling National Bank **
 Irena Choi Stern & Bruce Stern **
 Mr. & Mrs. Richard Stigelman *
 Mr. & Mrs. Steven G. Thomas **
 Schatze & Peter Thorp **
 Margaret & John Torell **
 Nancy & Carlo Vittorini **
 Betsy & Jim Walkup **
 Mr. & Mrs. Mark Webb
 Helen & Tom Welling **
 Mr. & Mrs. Addison Werner

CONTRIBUTOR (\$250 – \$499)

Annette & Saman Adamiyatt **
 Mr. Michael T. Ahearn
 Mr. & Mrs. Robert G. Anderson **
 Mr. & Mrs. Thomas G. Andruss **
 Mr. & Mrs. Robert Angelone **
 Dr. Anne Angevine &
 Dr. Peter Angevine *
 Mr. & Mrs. John T. Atkins **
 Ms. Regina Baio **
 Mr. & Mrs. Christopher Becker
 Mr. & Mrs. Anthony Beldotti
 Mr. Paul J. Benzinger, Jr. **
 Mr. & Mrs. Francis J. Bergold **
 Suzanne & Tom Bloomer **
 Mr. & Mrs. Kevin Brown
 Ms. Amanda Cullen &
 Mr. Brian Bull *
 Mr. & Mrs. Robert Caccavo **
 Mr. & Mrs. Frank Cappelleri **
 Mr. & Mrs. John Carapella
 Mr. John Colavita **

Mr. & Mrs. James P. Connors **
 Mr. Gerald Conway *
 Ms. Maryann T. Cortelli **
 Mr. & Mrs. John P. Curran *
 Mr. & Mrs. John Debitetto
 Barbara & Dick Detwiler **
 Mr. & Mrs. Ralph T. Dimpel Jr. **
 Mr. & Mrs. Stephen Doherty *
 Mr. & Mrs. Robert C. Dohrenwend **
 Claudia & Jeremy Dole **
 Mr. & Mrs. Michael Donovan *
 Mr. & Mrs. Daniel Duggan *
 Mr. & Mrs. John E. Estes *
 Lisa & Ken Favaro **
 Mr. & Mrs. Gerald M. Fischhoff **
 Annette & Gennaro Fulvio **
 Gabriel Bundschuh &
 Associates, Inc. **



Ms. Charlotte Church &
 Mr. Jonathan Gaines *
 Ms. Julie Brenton &
 Mr. R. D. Galbraith **
 Mr. & Mrs. Gregory J. Galligan *
 Mr. & Mrs. Frank T. Geysen **
 Mr. & Mrs. Kenneth Giuriceo *
 Janet & Chris Goff **
 Alida & Chris Goodman **
 Mr. & Mrs. Peter Gordon
 Mr. & Mrs. Christopher Gunther *
 Elsie M. Hall **
 Mr. & Mrs. Patrick Halloran
 Mr. & Mrs. Jim Hendry *
 Mr. & Mrs. John Hodulik *
 Mrs. Betsy Harding &
 Mr. Thomas C. Hutton **
 Mr. & Mrs. Raymond Inello *
 Mr. & Mrs. Sergey Izotov *
 Ms. Jennifer L. Richardson &
 Mr. George K. Jaquette *
 Joanne & Stephen Jones **
 Erica & Doug Jones **
 Mr. & Mrs. Alfred Kellogg **
 Mr. & Mrs. Brooks J. Klimley **
 Diana & Gregory Koster **
 Marcia & Larry Lee **

Mr. & Mrs. Walter LeStrange *
 Licalzi Plumbing & Heating, Inc. **
 Mr. & Mrs. Ronald Lockhart **
 Dr. & Mrs. Guy Longobardo **
 Ms. C. Helen Lovell **
 Mr. & Mrs. Stuart Mackintosh **
 Mr. & Mrs. Paul Maginn
 Mr. & Mrs. Steve Malley
 Mr. & Mrs. Ken Mandanas
 Mr. Charles H. Maspero **
 Mr. & Mrs. Charles T. Maxwell **
 Mr. & Mrs. Kevin McArdle *
 Sheryl & William McCafferty **
 Mr. & Mrs. Mark D. McCarthy **
 Mr. Frederick W. McGrath *
 Mr. & Mrs. Michael McHale **
 Mr. & Mrs. Johnson McKelvy
 Nancy & Matt McKenna **
 Marlene & George McKinnis **
 Mr. & Mrs. Scott M. McMurray *
 Mr. & Mrs. John McSherry **
 Mr. & Mrs. Charles P. Meade **
 Mr. & Mrs. Kevin L. Mellyn **
 Mr. & Mrs. C. V. Meserole III **
 Mr. & Mrs. Jack Meyercord
 Mr. & Mrs. Paul A. Michels *
 Mr. & Mrs. William Miller *
 Mr. & Mrs. Bradley Morgan
 Mary Liz & Bill Mulligan *
 Lorraine Mohan &
 James Murray **
 Mr. & Mrs. Patrick Murtagh **
 Mr. & Mrs. Jeffrey Nazzaro
 Mr. & Mrs. David O'Shaughnessy
 Mr. & Mrs. David Park
 Mr. & Mrs. Ralph Petrillo
 Madryn & John Priesing **
 Anonymous **
 Patricia & David Reilly **
 Mr. & Mrs. Ian Rowan *
 Mr. & Mrs. Edward A. Ruffo *
 Kathy Dodsworth-Rugani &
 Rick Rugani **
 Mr. & Mrs. James Russo **
 Tracy and Jim Rutherford **
 Mr. & Mrs. Joseph Saad *
 Mrs. Alexandra Samra **
 Irene & Carmine Sarno **
 Joan S. Sawyer **
 Ellen & Bob Seabring **
 Mr. & Mrs. Donald E. Sharp **
 Mr. & Mrs. Richard A. Shearer **
 Mr. & Mrs. Richard Siklos
 Mr. & Mrs. Thomas S. Sipple *
 Margaret & Bill Slattery **



Mary & Ed Smith **
 Mr. & Mrs. Edward Sondey *
 Mr. & Mrs. Jeffrey Symons *
 Mr. & Mrs. Edward Tai
 Mr. Donald Tashner **
 Mr. Arthur G. Taylor **
 Christine & Tom Tormey **
 Mr. & Mrs. Timothy F. Tyler *
 Sarah & Bob Underhill **
 Mr. & Mrs. Peter Vermette
 Dr. & Mrs. Robert M. Wein **
 Dr. & Mrs. Raymond Weiss **
 Mr. & Mrs. Matthew Wetty **
 Mr. & Mrs. Scott White **
 Mr. & Mrs. James Wilmott
 Kelly & John Woods **
 Mr. & Mrs. William H. Yankus **
 Clare Gorman &
 Jeff Zuckerman **

DONOR (UP TO \$249)

Ms. Luci Abruzzo **
 Mr. & Mrs. Anand Acharya
 Mr. & Mrs. Jay Ackerman **
 Dr. Bradley Adler *
 Mrs. Phyllis Agovino **
 Ms. Lana Popkova &
 Mr. Mark Ahern *
 Trudy Ahlbrecht **
 Julie & Jim Alexandre **
 Mr. & Mrs. Steven J. Altamura **
 Mr. & Mrs. Francis M. Alter **
 Ms. Jeanne Alter
 Mr. & Mrs. Thomas A. Angello
 Mr. Thomas J. Ashley **
 Ms. Mary Assumma **
 Mr. & Mrs. Paul Austi **
 Mr. & Mrs. Scott Bacigalupo *
 Mrs. Albert X. Bader, Jr. **
 Mr. & Mrs. Robert C. Baldino *
 Mrs. Frank P. Barba **
 Ms. Loretta Barnaskey **
 Miss Elizabeth Bauer *
 Mr. & Mrs. Louis Bauman *

Mr. & Mrs. Ian M. Baxter
 Ms. Eugenia Kedas &
 Mr. Brock Bazinet
 Mr. & Mrs. Anthony Befi **
 Mr. & Mrs. Steven Bekoff
 Mr. Michael Bellach *
 Ms. Kyle A. Moran & Mr. Glenn D.
 Bellitto **
 Carol Bender *
 Mr. Doris Benson **
 Jeanne & Bob Berney **
 Mr. & Mrs. Philip Biancavilla **
 Doris Blair **
 Mr. & Mrs. Gene R. Blendermann **
 Mr. & Mrs. Douglas Bond **
 Mrs. Joan Bonsignore **
 Margaret Monahan & Roland Bopp **
 Ms. Julia Golier &
 Mr. William Bornmann
 Marilyn & John Bottjer **
 Mr. & Mrs. Richard H. Bower **
 Mr. & Mrs. Michael Brachlow
 Mr. & Mrs. Michael Brandes
 Ms. Eleanor Brems **
 Lorella & Hugh Brocklesby **
 Bronxville Real Estate **
 Dr. & Mrs. Marc Brown **
 Mrs. Joseph Brown, Jr. **
 Mr. & Mrs. Albert Bruno
 Mr. & Mrs. Frank P. Bruno
 Mr. & Mrs. Edward Bucciarelli *
 Mr. & Mrs. Richard Buckley *
 Mr. & Mrs. James Bunn **
 Mr. & Mrs. Dennis Busti **
 Mr. & Mrs. Brian Byrne **
 Jill Fowler Cade **
 Ms. Helen Knapp &
 Mr. Charles W. Cagliostro *
 Mr. & Mrs. Robert Callanan *
 Mr. & Mrs. Gray Calvert *
 Mrs. Kathryn Cantatore **
 Mr. & Mrs. Louis Caraccio **
 Mr. & Mrs. James M. Carey *
 Tom & Katherine Carr **
 Mr. & Mrs. Robert Cartolano **
 Mr. & Mrs. Robert Casazza
 Bill & Katie Casperson **
 Ms. Paulette L. Castillo *
 Mr. & Mrs. James Caulfield **
 Ms. Colleen Cermele
 Ms. Annette Cherry **
 Mr. & Mrs. George L. Childs Jr. **
 Mr. & Mrs. Vincent J. Ciaramella **
 Mr. & Mrs. Peter Ciregna **
 Vivian & Bernard Coghlan *

Mr. & Mrs. Dominic Colarusso **
 Mr. & Mrs. Michael Collins *
 Dr. & Mrs. Carl Comuniello *
 Mr. & Mrs. Michael Coyne
 Mr. & Mrs. Michael Crinieri **
 Sheila & Oliver Cromwell **
 Mr. & Mrs. John J. Cullen **
 Mr. & Mrs. John Cushman
 Mr. & Mrs. Thomas G. Damiano *
 Mr. & Mrs. John V. D'Arco *
 Mr. & Mrs. Nick Dator
 Carole & Joseph DeLaurentis **
 Anonymous **
 Mr. & Mrs. Raymond DelSavio **
 Mr. & Mrs. Michael Denning
 Candace & Cortes DeRussy **
 Mr. & Mrs. Andrew Destefano
 Ms. Angela DiGioia **
 Mr. & Mrs. Michael Dilegge *
 Mr. & Mrs. Leo G. DiPasquale *
 Ms. Linda Sawyer &
 Mr. Donald N. Dirks **
 Mr. & Mrs. Brendan L. Dolan *
 Joan & Kevin Donohue **
 Mr. & Mrs. Brian Donohue
 Mr. & Mrs. Michael Doody
 Mr. Warren D. Douglas **
 Dr. & Mrs. John J. Doyle *
 Mr. & Mrs. Thatcher Drew
 Mr. & Mrs. Paul B. Dysenchuk **
 Mrs. Unni Edelman *
 Mrs. J.E. Elsner *
 Mr. & Mrs. Warren Empey *
 Mr. Paul Engelson *
 Mr. & Mrs. James R. Eustis **
 Mr. & Mrs. Robert C. Everett **
 Nina & Christopher Evison *
 Dr. David M. Fairchild **
 Dr. Nora Farkouh &
 Mr. Samir Farkouh **



Mr. & Mrs. Timothy Fasel **
 Mrs. Tuula Feineis
 Liz Hoskinson & Gary Finger **
 Mr. & Mrs. John Fix **

Cathy & Michael Flanagan **
 Virginia & Samuel Fleming **
 Mr. & Mrs. Sean Flynn
 Liz & Biff Folberth **
 Mr. & Mrs. William Frey **
 Ms. Nancy Friedman **
 Mrs. M.J. Territo &
 Mr. Richard Fursland *
 Mr. & Mrs. Daniel Galella *
 Mr. & Mrs. Robert Galloway *
 Mr. & Mrs. Sal Gangemi
 Ms. Antoinette Gangemi **
 Mr. & Mrs. William Gay **
 Boo & Ken Gemes **
 Mr. & Mrs. Madappallil George **
 Mr. & Mrs. William Gerken *
 Mr. & Mrs. Morris A. Giannotto **
 Mr. & Mrs. Vito A. Giordano **
 Dr. Mary Giuffra &
 Mr. Robert Giuffra **
 Mr. & Mrs. Mark Gjelaj
 Mr. & Mrs. Vincent J. Glazewski **
 Mr. & Mrs. F. H. Goddard
 Ms. Esta Goodman **
 Cathy and Jack Gravenese *
 Mr. & Mrs. Joseph Gravier
 Mr. & Mrs. John Griffen *
 Ms. Janice Groth *
 Dr. & Mrs. Paul Grunseich **
 Ms. Linda Guaccero-Doherty **
 Mr. & Mrs. Christopher J. Gulotta, Esq. **
 Mr. & Mrs. Joseph Haggemiller
 Mr. & Mrs. Eric P. Haims **
 Mr. & Mrs. Tyler Hale
 Mr. & Mrs. John Halsted
 Mr. & Mrs. Carl C. Hamann **
 Mr. & Mrs. Kenneth Hanau **
 The Martin Hanley Family
 Mr. & Mrs. Leland S. Hanson **
 Mrs. Sue Hartwell & Reverend Robert
 Hartwell **
 Mr. & Mrs. James F. Hayden **
 Mr. Frank Headley Jr.
 Mr. & Mrs. William C. Heck **
 Mr. & Mrs. Stephen V. Heinzinger **
 Mr. & Mrs. Jared Hershberg
 Ms. Erin Hill
 Mr. & Mrs. Andrew Hogue
 Mrs. Virginia Holek
 Mr. & Mrs. Aaron Hood *
 Mr. & Mrs. Christopher Horvers
 Elizabeth & Stephen Howard **
 Mr. & Mrs. Nathaniel Huggins III
 Mr. Richard J. Hurley *
 Mr. & Mrs. Stephen J. Huvane **

Ms. Dorothy T. Iorio *
 Mr. & Mrs. Ward Ives **
 Juli & Robert Jackson **
 Ms. Donna Jaeger
 Mr. Drew Jaglom **
 Ms. Janet Jaidi **
 Mr. & Mrs. Christopher P. Johnson **
 Mr. & Mrs. Walter C. Jones **
 Mr. Gregory A. Joseph **
 Mr. & Mrs. Gary Joseph **
 Mr. & Mrs. Kevin P. Judge
 Miss Barbara Ann Kastner **
 Mr. & Mrs. Albert Kawer **
 Mr. & Mrs. Peter Kelleher *
 Mr. & Mrs. John Kelty *
 Mr. & Mrs. Alfred Kelty **
 Mrs. Florence Kennedy
 Mr. & Mrs. Michael Kiley
 Ms. Margaret Wang &
 Mr. John Kim
 Ms. Lucille Kinney *
 Mr. & Mrs. Donald Kittredge **
 Mr. & Mrs. Christopher Krieg *
 Mr. & Mrs. Tomasz Kulik *
 Marcia & Jeff Lange **
 Mr. & Mrs. Robert Lappetito *



Catherine & Peter Laterza **
 Lawrence Hospital Employees **
 Dr. & Mrs. Robert Lerner **
 Mr. & Mrs. Angelo A. Liberatore *
 Mrs. Maureen Licursi & Mr. Thomas
 Cefola **
 Mr. & Mrs. Leonard Lieboff *
 Mr. & Mrs. Mark Liggitt *
 Mr. & Mrs. James T. Lilly, Jr. **
 Mr. & Mrs. Bartholomew Linehan *
 Mr. & Mrs. Linnin
 Mr. & Mrs. James Lombardi
 Mr. & Mrs. Philip J. Lombardo **
 Ms. Sondra Luger **
 Ms. Victoria Lusk
 M & K Construction
 Services Corp
 Ms. Lynn MacDonald *

* Supporter for 3 or more years
 ** Supporter for 10 or more years

OUR DONORS (Continued)

Mr. & Mrs. Alastair MacMillan-Bell *
 Mrs. Hortense Magee **
 Mr. & Mrs. John D. Magnan *
 Mr. & Mrs. Paul L. Mahnen **
 Maison Rouge *
 Mr. & Mrs. Gregory A. Maitner *
 Mr. John T. Mancini
 Mr. & Mrs. Carl Mann **
 Mr. & Mrs. Glen Maranga *
 Mr. & Mrs. Edwin A. Margolius *
 Valerie & Paul Marini **
 Mr. Nick Markola *
 Mr. & Mrs. John Marshall **
 Mr. & Mrs. David Marshall *
 Mr. & Mrs. Stuart Marshall
 Ginny & Ed Martin **
 Dr. & Mrs. Robert Martin *
 Dr. Robert J. Marzziotti **
 Mr. & Mrs. Robert P. Marzziotti **
 Mr. & Mrs. John F. Mastroberardino
 Mr. & Mrs. Carmine Masucci **
 Randy Mayer & Pat Halloran **
 Mrs. Martin McAteer **
 Mr. & Mrs. James B. McCaffrey **
 Mr. & Mrs. M. Patrick McCloskey **
 Mr. & Mrs. William McCormack *
 Ms. Johanna Lavin &
 Mr. Philip McCorry
 Mr. & Mrs. Michael McEnroe **
 Mr. & Mrs. Brian McGurn
 Mr. & Mrs. Thomas A. McKenna **
 Medi-Ray, Inc. **
 Ms. Joann Meehan **



Mr. & Mrs. Jack Mehler **
 Laura & Mark Mendley **
 Mr. & Mrs. Charles S. Miller **
 Pam & Guy Minetti **
 Anthony Minicucci &
 George Minicucci **

Mrs. Jane K. Mitchell **
 Dr. & Mrs. Michael J. Morelli **
 Ms. Rozanne Moretti-Schwab *
 Mr. & Mrs. John Morris *
 Ms. Concetta Mucci **
 Mr. William P. Munro **
 Ms. Alice P. Munzo **
 Mrs. Sarah Muehlhausen-Murphy &
 Mr. Richard Murphy **
 Mr. & Mrs. Joseph Murphy **
 Mr. & Mrs. John Murphy *
 Mr. Michael Murphy
 Mr. John F. Murphy **
 Mr. & Mrs. Thomas P. Murphy *
 Mr. & Mrs. Robert Murray
 Mr. Mark Nadler
 Mrs. Linda Nagle
 Mr. & Mrs. Ralph Napolitano **
 Mr. & Mrs. Christopher Nay
 Ms. Carla L. Countryman &
 Mr. Thomas B. Nichols
 Mr. & Mrs. Jeffrey Nicholson **
 Dr. & Mrs. Irwin Nydick **
 Mrs. Elda DiRe &
 Mr. Sean O'Brien **
 Mr. & Mrs. William F. O'Connell **
 Dorothea & Ken O'Connor **
 Ms. Jessica Sessions &
 Mr. Robert O'Hare *
 Mr. & Mrs. Gary Olt
 Ms. Joan T. O'Neill **
 Mr. & Mrs. Martin O'Neill
 Mr. & Mrs. David Orth
 Mr. & Mrs. Allan D. Osten **
 Mr. John G. Palladino **
 Mr. & Mrs. Louis A. Parks **
 Mr. & Mrs. Scott Patterson
 Mr. & Mrs. Matthew C. Peterson *
 Mr. & Mrs. John Phelan *
 Mr. & Mrs. Kevin Phillips *
 Mr. & Mrs. Vito Pinto **
 Mr. & Mrs. Stephen Piraino
 Mr. & Mrs. Robert Pisano **
 Mr. & Mrs. Paul Planet
 Mr. & Mrs. Giovanni Portale **
 Donna & Lloyd Prezant **
 Mr. & Mrs. Jason Prior *
 Mr. & Mrs. Robert Pulaski **
 Mr. & Mrs. Richard G. Pyle **
 Mr. & Mrs. Stephen Quigley *
 Mr. & Mrs. Saul H. Radin **

Mr. & Mrs. Paul Ramundo *
 Mr. & Mrs. Jack R. Randall *
 Mr. & Mrs. Paul D. Ranieri **
 Mr. & Mrs. Ashvin Rao *
 Susan E. Reisinger **
 Mr. Ralph Ressa **
 Riccardi Landscape Design
 Ms. Carmela Rice **
 Mr. & Mrs. Mark Roberts *
 Miss Frances Roberts **
 Mr. & Mrs. Frederick V.
 Romano Jr. **
 Mr. & Mrs. Fred Romley
 Mr. & Mrs. David Rosensweig *
 Harriet and Robert Rubin **
 Ms. Diane Ryan *
 Mrs. Catherine Perkinson Sabol *
 Mrs. Mary Salanitro **
 Mr. & Mrs. Scott Samios
 Mr. & Mrs. Joseph Santamaria **
 Mrs. Carola Saponara &
 Dr. Eduardo M. Saponara **



Lisa & Mike Sargent **
 Mr. & Mrs. Jeffrey Sarlo
 Eileen & Robert Savage **
 Deborah & James Scalise **
 Ms. Mary Ellen Scarborough **
 Mr. & Mrs. Kevin Schaefer **
 Ms. Victoria Schembri
 Ms. Marie Schembri
 Mr. & Mrs. Mark Schivley *
 Mr. & Mrs. Richard F. Schmidt **
 Sandra and Peter Schubert *
 Mr. & Mrs. Christopher L. Scotti **
 Diane & Elliot Senderoff **
 Mr. John E. Seng **
 Mr. & Mrs. Douglas Sesler **
 Mr. & Mrs. Nathan Sevilla *
 Mrs. Rita Shea **

Arlene & Robert Sherwood **
 Mr. & Mrs. Nicholas Sheumack *
 Mr. & Mrs. George Shively **
 Ms. Margaret B. Shiverick **
 Dr. & Mrs. Paul Sidoti *
 Mr. John P. Silvestri
 Chantal & Bob Simon **
 Mr. & Mrs. John J. Sirabella *
 Mr. & Mrs. Anthony J. Sirabella *
 Sitkins Group, Inc.
 Ms. Mary Smith **
 Mr. John Sobocinski
 Mr. & Mrs. Brian Sokol *
 Ms. Elena Sollecito *
 Mr. Marvin M. Specter **
 Mr. & Mrs. Roger N. Spitz **
 Mr. & Mrs. Peter J. Srere **
 Mr. & Mrs. O. K. Stauble **
 Mrs. Louise G. Stern **
 Ms. Claire E. Sternecker **
 Mr. & Mrs. Joseph N. Stineman **
 Mr. Hedley Stothers **
 Mr. & Mrs. Ralph S. Stupple *
 Mr. & Mrs. Edward Sulimirski
 Mr. & Mrs. Joseph Sullivan *
 Ms. Audrey Sutton **
 Mrs. Robert H. Tapp **
 Dr. Alyssa Gursky &
 Mr. Nunzio Tarantino **
 Mr. Vaughan R. Thiebauth **
 Mr. & Mrs. Frank Travers *
 Ms. M. Kathleen Troup **
 Dr. & Mrs. George L. Unis **
 Dr. & Mrs. Henry Michael Ushay **
 Mr. & Mrs. Donato Vaccaro
 Mrs. Louise Vaccaro **
 Mr. & Mrs. Thomas Vail
 Mr. & Mrs. Tyler Vaughey
 Mr. & Mrs. James Von Albade
 Mr. & Mrs. Lawrence Vranka
 Mr. & Mrs. Hugh Walsh
 Mr. & Mrs. Brendan Weiden **
 Westchester Funeral Home, Inc.,
 The Benedict Family **
 Peggy & Dick Williams **
 Ms. Bernice Yancy
 Mr. & Mrs. Peter Zhao *

* Supporter for 3 or more years

** Supporter for 10 or more years

GOLF OUTING 2015

We would like to thank our sponsors and participants of our 2015 Golf Outing.

GRAND SPONSORS (\$10,000)

Pepe Auto Group

The Raffiani Family Foundation



CART SPONSOR (\$3,500)

Tuckahoe – Eastchester Lions Club

PUTTING SPONSORS (\$2,500)

Bertine, Hufnagel, Headley, Zeltner, Drummond & Dohn LLP
Entergy

COCKTAIL SPONSORS (\$1,000)

Boiano Dental Group

Comizio Orthodontics

Hymes and Associates, CPA

Bronxville Real Estate

Rose & Steve Crawford

Joella & John Lykouretzos

Cognitive Assessment
Services, Inc.

Fenway Partners

Paraco Gas

Margaret & Anthony
Colavita

Houlihan Lawrence
Real Estate

Pete's Park Place Tavern

Pirkko & Ron Stechler

LUNCH SPONSORS (\$500)

Bronxville Rotary Club

Julia B. Fee Sotheby's
International Realty

The Sears Family -

Henry A. Blom, DDS, PC
Family Dentistry

Dr. Joseph Manzi, DDS

Darling Clementines

Elide Building Corp.

Medi-Ray, Inc.

Sterling National Bank

D.C Ranieri Insurance Agency

Kerry Walsh

GOLF OUTING

(Continued)

TEE SPONSORS (\$250)

AMHAC & Weinberg Development
Calano & Culhane, LLP
The Clothes Doctor
John Colavita
Carol Conway, Bronxville Ley Real Estate
The Cooney Family
Cornell's True Value
Corner Furniture
Crest Electric Corp. ~ Joe Peidmont
Dobbs & Bishop
Eastchester Italian American Citizens Club
Eastchester Rotary
Eastchester Town Council
Luigi Marcoccia, Glenn Bellitto,
Joe Dooley, Theresa Nicholson
Eastchester Trip Service
Eastchester Volunteer Ambulance Corps
Mayor Steve Ecklund ~
Tuckahoe Republican Committee
Epstein's

F. M. Schildwachter & Sons
"Plan B", Brian Fetherstonhaugh
The Harris Family
J.C. Fogarty's Town Tavern
J. Pocker & Son, Inc.
Kawer's Tuckahoe Paint & Glass, Inc.
Kirenaga Partners
Lange's of Bronxville, Thomas Bass
Licalzi Plumbing & Heating, Inc.
Matty's Auto Body, Inc.
Michael Serio, Inc, Complete Tree Care
Karen & Roland Morris
Nature's Cradle Nursery
New York-Presbyterian /Lawrence Hospital Center
Kim & James Powell
Clyde E. Reetz, CBRE, Inc.
Chuck & Mark Rollins
Smith-Cairns Ford Mazda Subaru
The Spillane Group,
Maggies, Molly's, Mickey's and Nelly's

Sterling National Bank
Strategic Wellness and Insurance Management Services Inc., Jeffrey Ungvary
Barbara & Fred Taylor
Telesco Lawnmowers, Inc.
Tri-Crest Realty
Tryforos & Pernice Florist
Veneruso, Curto, Schwartz & Curto, LLP
Wayne Printing, Inc.
Wells Fargo
Westchester Funeral Home,
The Benedict Family



AUCTION/RAFFLE/PRIZE CONTRIBUTORS

Adriana Day Spa
Susan & Larry Bettino
Blow & Beyond
Boo Gemes
Cindy Bothwell, "What's for Dessert?"
Breezeway
Broken Bow Brewery
Jacqueline & John Brusco
Jeanne & Ted Burbage

Melinda & Scott Burge
John Byrne's Scarborough Fair Catering
Michael Calano
Mariellen & Noble Carpenter
Ciao's Restaurant
Citrine
City Winery
Claire D. Leone Real Estate
The Cooney Family,
Eue Screengems Studios, LTD.
Melinda & Tom Dempsey
Design Lighting by Marks
Alex Diaz, Ph.D., Sports Mental Edge
Discovery Times Square
William Q. Dowling
Eastchester Fish Gourmet
Eastchester Trip Service
Ernie's Wine Bar & Eat's
Jan Fabry, The Pearl Restaurant Group
Foods of New York Tours

Gabriel Bundschuh & Associates
Ingrid & Adam Gibbons
Green Wood Flowers
Fran & Dave Harris
G. Christopher HARRISS
Matthew HARRISS
Michael Hartnett
Kristin & Andrew Harwood
Sean Hayes
Molly & Tom Hendrick
J. McLaughlin, Bronxville
J. Pocker & Son, Inc.
John Scott's Surf Shack
Dean Johnson
Kensington Paper
Douglas Kooluris,
G. Griffin Wine & Spirits
Sarah & Steve Kramer
Erin & Kurt Krestinski
Richard Leroy



AUCTION/RAFFLE/PRIZE CONTRIBUTORS (CONTINUED)

Kristin & Doug Lodal
Lyte Body Fitness
Maison Rouge
Mano A-Mano, Ltd.
Rosetta & Kevin McArdle
Judi & Tom McCandless



2015 Golf Outing Co-Chairs
Jim Rotenberg and Judy Foley

Michael A. McManus
Kevin McNeill,
Dobbs & Bishop Fine Cheese
Stafford & Doug Meyer
Maryanne Mills
Mini's Prime Meats & Specialties

Mrs. Morgan's Flower Shop
Kyla & John Murphy
NY Giants Community Relations
NY Jets Community Relations
NY Rangers
NY Skyride
Susan & Patrick O'Brien
Joan O'Donnell
Katharine & Dave Outcalt
Steven Palm,
The Westchester Restaurant Group, Inc.
Sharon & Chad Parson
Margaret & Andy Paul
Pepe Auto Group
The Pipers Kilt
Cynthia & Jack Randall
Clyde E. Reetz, CBRE Inc.
Jim Rotenberg
Suzette & Michael Sands
Rachel & Steven Schwartz
Silver Spoon
Lisa H. Sorensen
Starbucks, Tuckahoe
Station Plaza Wine & Spirits
Lisa Kunstadter & Nick Stephens

Stew Leonard's
Studio One
Fred Taylor
The Silk Road
Lauren & Daniel Toal
Toney Toni & the Gang
Tony Giannoni, Plumbing & Heating
Toscana
Jennifer & Jeff Ungvary
The UPS Store
Valerie Wilson Travel, Inc.
Doug Vaughn, NBC Entertainment
Vineyard Vines
Dale & David Walker
Walt Disney World Co.
Westchester Magazine
Westchester's Ridge Hill ~
Forest City Ratner Companies
John Westerfield
Wilson Sporting Goods
The Wine Stop
Womrath Bookshop
Yum Yum Tree
Zen Spa

2015 COMMUNITY FUND AWARD

Presented to **Patty Donovan-Duff,**
Director of The Bereavement Center of Westchester

The Community Fund award is given in recognition of excellence in the execution of a Member Agency's mission. The person, or agency, receiving the award should exhibit an altruistic passion for achieving the agency's goals. They should be dedicated, exhibit operational astuteness, be flexible to changing circumstances and make a significant contribution to the agency and BET community.

Patty Donovan-Duff was chosen in recognition of her 20 year career at the helm of the Bereavement Center of Westchester (BCW) and its Tree House Program. Her tenure at the BCW exemplifies the lofty standards set by The Community Fund to receive this award and we acknowledge her work there as an example for others to follow.



CORPORATE SUPPORT

The Board of The Community Fund would like to thank the following corporations that generously supported their employee's contributions.

Alliance Bernstein	Goldman Sachs	The Rockefeller Group
American Express	IBM	Travelers
Assured Guaranty	ING	Tudor Invertments
Bank of America	JP Morgan Chase & Co.	UBS
Bank of New York Mellon	Mastercard	United Way Greenville County
Carnegie Corp	MBIA	United Way of Coastal Fairfield
Deutsche Bank	McKinsey Co.	Wells Fargo
First Eagle Investment Management	Morgan Stanley	Ziff Brothers Investments
GE Foundation	Pepsico	
	Regeneron Pharmaceuticals	

OUR VOLUNTEERS

We would like to thank the following individuals who generously contributed their time, expertise and inspiration.

AGENCY EVALUATORS

Lisa Dawson	Diane Knight	Susie McCloskey	Lisa Rao
Karen Day	Amy Rutter Korb	Maura McMahon	Elisa Rizzo
Ashleigh Donovan	Jonalie Korengold	MaryAnn Michels	Irene Sarno
Wendy Rosavelt Fahy	Erin Krestinski	Sarah Murphy	Katie Shah
Marc Garbarini	Tracy Lilly	Mike Murray	Thomas Sipple
CeCe Heraty	Janet Lyons	Laura Murray	Albert Van Ness
Cinda Hughes	Dana MacNaughton	Nora Nazzaro	Dan Wilson
Jennifer Richardson Jaquette	Margaret Mager	Dave Outcalt	

GOLF OUTING

Tom Andruss	Olga Kochetova	Sal Pepe	Pirkko Stechler
Alex Burge	Andrew Korb	Laura & Phil Raffiani	Fred Taylor
Scott Burge	Nina McManus	Sarah Reynolds	Jeff Ungvary
Margaret Colavita	Kevin McNeill	Chuck Rollins	Kerry Walsh
Joe Comizio	Dan Minnis	Mark Rollins	
Noreen Culhane	Steven Palm	David Scalzo	
Krista Gresia	Joe Pepe	Marty Schulman	

OUR BOARD OF DIRECTORS

July 1, 2014 - June 30, 2015

Katharine Outcalt, *President*
P. Douglas Meyer, *President-Elect & Campaign Co-Chair, Bronxville*
Judi McCandless, *Secretary*
Dana Arrighi, *Treasurer*
Larry Bettino, *Investments Co-Chair*
Joella Lykouratzos, *Investments Co-Chair*
Donna Ruhanen, *Marketing Chair*
Annette Healey Dowling, *Campaign Co-Chair, Bronxville*
Neal Denning, *Campaign Co-Chair, Eastchester*
Susan Kutzin, *Campaign Co-Chair, Eastchester*
Ronald A. Mager, *Evaluations Co-Chair*
Cathy Needham, *Evaluations Co-Chair*
Judy M. Foley, *Golf Co-Chair*
James Rotenberg, *Golf Co-Chair*

Stephen Arcano
Andrea Bates
Michael A. Calano
Robert Castaño
Jennifer Nelsen Colao
Michael Connolly
Kristen Evans
Philippa Freeman
Frances Harris
William U. Knox
Jennifer Lescott

Michelle Liscio
Rosetta McArdle
David McBride
Kimberly C. Powell
John Dixon Reynolds IV
William J. Rizzo
Jeffrey P. Rohr
Lauren Toal
Elinor Urstadt
Mark J. Welshimer

July 1, 2015 - June 30, 2016

P. Douglas Meyer, *President*
Neal Denning, *President-Elect & Campaign Co-Chair, Eastchester*
Kimberly C. Powell, *Secretary*
Dana Arrighi, *Treasurer*
Jennifer Lescott, *Investments Co-Chair*
Joella Lykouratzos, *Investments Co-Chair*
Donna Ruhanen, *Marketing Chair*
Michael A. Calano, *Campaign Co-Chair, Eastchester*
Annette Healey Dowling, *Campaign Co-Chair, Bronxville*
William J. Rizzo, *Campaign Co-Chair, Bronxville*
Andrea H. Bates, *Evaluations Co-Chair*
James Rotenberg, *Evaluations Co-Chair*
Robert Castaño, *Golf Co-Chair*

Stephen Arcano
Jennifer Nelson Colao
Ashleigh Donovan
Kristen Evans
Judy M. Foley
Philippa Freeman
Frances Harris
William U. Knox
Amy Rutter Korb
Ronald A. Mager

Rosetta McArdle
David McBride
Kevin McNeill
Cathy Needham
Katharine Outcalt
John Dixon Reynolds IV
Thomas Sipple
Lauren Toal
Albert Van Ness
Mark J. Welshimer

HONORARY BOARD MEMBERS

Jim Alexandre	Travis F. Epes
Tom Andruss	Betsy Goodell
George Austin	Donald Gray
Bill Barton	Gayle Haller
Peter Bertine	Tom Likovich
Jeanne Branthover	Dan MacDonald
Margaret Colavita	Robert McCann
Greg Coleman	Charlie Meade
Joe Comizio	David Morse
Bob Dohn	Quentin Murphy
Bill Ellis	Laura L. Raffiani

Jeffrey P. Rohr
Chuck Rollins
Mark Rollins, III
Tracy Rutherford
Wes Sparks
Nick Stephens
Joe Stineman
Frederick H. Taylor, Jr.
Juliet Zygmunt



Outgoing President
Katharine Outcalt with
FY 2016 President Doug Meyer

STAFF

Melinda Burge, Executive Director
Karen Gresia, Assistant Director

THE COMMUNITY FUND

FY 2016 AGENCIES AND PROGRAMS

Andrus Early Learning Center	337-4492
Bereavement Center of Westchester.....	787-6185
Cabrini of Westchester.....	693-6800
Cancer Support Team, Inc.	777-2777
Cancer Survivorship Program at NYP/Lawrence Hospital.....	787-4115
Community Flu Shot Program at NYP/Lawrence Hospital	787-6060
The Counseling Center, Inc.	793-3388
D.A.R.E. Eastchester Police Department.....	961-3464
D.A.R.E. Tuckahoe Police Department	961-4800
Eastchester Community Action Partnership	337-7768
Eastchester Teen Scene	771-3311
Eastchester Senior Programs & Services.....	771-3340
Eastchester Youth Council Summer Theater.....	760-2517
Eastchester Volunteer Ambulance Corps (EVAC) Office	337-3071
Gramatan Village	337-1338
The Maxwell Institute.....	337-6033
S.E. Consortium for Special Services.....	698-5232
Senior Citizens Council 10708 Center.....	793-2222
Senior Citizens Council Tuckahoe Center	337-8487
Tuckahoe Police Youth Programs.....	961-4800
Tuckahoe Trolley	961-3100
Victims Assistance Services.....	345-3113
(Hotline)	345-9111
Westchester End of Life Coalition	320-9179
Wartburg	699-0800
Bronxville.....	Village Hall 337-6500; Police Department 337-0500
Eastchester.....	Town Hall 771-3300; Police Department 961-3464
Tuckahoe.....	Village Hall 961-3100; Police Department 961-4800



Bronxville Eastchester Tuckahoe

17 Sagamore Road, Bronxville, New York 10708

PHONE: (914) 337-8808 • EMAIL: info@thecommunityfund.org • www.thecommunityfund.org

Many thanks to our Member Agencies and Community Programs for the use of their photographs.

A copy of the latest financial report filed with the Attorney General of New York is available on request by writing to New York State Department of Law, Charities Bureau, 120 Broadway, New York, NY 10271 or to The Community Fund, 17 Sagamore Road, Bronxville, NY 10708.